



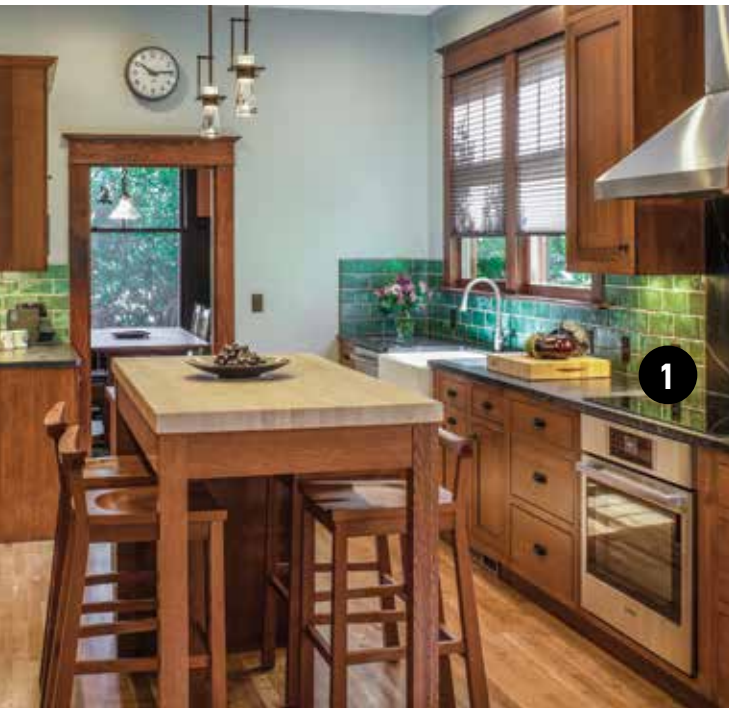
# Earthy Colors, New Layout

Textured tile and quarter-sawn oak make it a handsome revival kitchen.

By Mary Ellen Polson / Eckert & Eckert Photography

It's amazing what tweaking the layout of the kitchen furniture can do in the right hands. The previous "updated" kitchen in this 1907 Arts & Crafts house wasn't particularly old, but it was poorly thought-out and lacked both storage and work space. One of the first suggestions made by the design team at Craftsman Design and Renovation was to relocate the range from the center of the room to a side wall. While it meant losing a window, the move opened up a spot for a range hood and cleared space for a redesigned island that better fit the linear kitchen. The team replaced the lost window by ganging a double window, with period casings, over the sink.

The owners chose quarter-sawn oak cabinetry from DeWils as a good fit for the house. The couple also selected an unusual, greenish-blue, hand-molded tile for the backsplash. In the adjacent sunroom, built-in banquette seating solved a flow problem in that small, transitional space. The banquette faces a table topped with a soapstone remnant, laid on a customized base from Symmetry Hardware. An Asian-inspired "butterfly" bench from The Joinery completes the suite.



## 1. RANGE RELOCATION

Tucking the new Bosch Benchmark induction range between banks of cabinets on the longest wall opened the room for a double-height island. Kyoto barstools are from The Joinery.

## 2. OPEN AND SHUT

Used sparingly, open-shelf cabinets break up the massing of upper cabinets. One provides quick access to cookbooks, the other a handy nook for a microwave oven.



2

3

## BE INSPIRED...

Contemporary but with details that pay homage to the Edison Age, the Macaulay mini pendant from House of Antique Hardware features an exposed-bulb design offset by vintage black and warm brass accents. Adjustable, it extends up to 39 3/4". \$192.90. [houseofantiquehardware.com](http://houseofantiquehardware.com)



Characterized by irregular edges and surface variation, tile from Ohio art-tilemaker Seneca Tiles is hand-formed using a special blend of local clays and wooden molds. Individually batched glazes offer subtle color variation. Made to order, from [senecatiles.com](http://senecatiles.com)

In colors including Industrial Yellow and Persimmon, this interpretation of the IBM clock ubiquitous in 1960s classrooms is by Schoolhouse. Spun steel case, domed lens, and steel dial: \$299. Reproduction "standard issue" IBM clock: \$249. [schoolhouse.com](http://schoolhouse.com)



The Edo stool from Thos. Moser has a hand-carved, crested back rest and stands on substantial, reverse-tapered legs. It's made of hand-finished hardwoods, in three heights. In cherry or walnut: \$2,000 to \$2,400. [thosmoser.com](http://thosmoser.com)



### 3. SASSY TERRA COTTA

A backsplash of hand-molded tiles in Water Lily, from Seneca Tiles, adds period color and textural contrast to the subdued green of the Brazilian soapstone counters.

### 4. BUILT-IN NOOK

A full-width banquette seat, with storage on both sides and underneath, ties the small sunroom to the kitchen, without blocking access to an adjacent room.



4